



Ocean Applicator Series from TE

Standard Features

- Designed for high repeatability and fast through-put
- Manufactured from high grade tool steels
- Processed using state-of-the-art CNC equipment for tightest tolerances
- 30 and 40 mm Stroke
- Pre-Feed and Post-Feed
- Cut and No-Cut Carrier Options
- Adjustable Bench and Lead-Maker Strippers
- Fine and tool-less wire and insulation crimp height adjustment
- Mechanical counter



EF Mechanical Applicator

The lead and harness industry of today is more price and quality competitive than ever before. TE Applicators are designed specifically to meet these demands. We strive to keep our applicators competitively priced while providing the consistent, high-quality terminations you expect from TE.

Why a new TE Connectivity Applicator Design?

Standardized applicator offerings provide global design consistency and offers the ultimate flexibility with choices in feeding options.

The new Ocean Applicators are designed so all feed options are interchangeable with the common base applicator. Our pneumatic and mechanical feed options have been completely redesigned. They offer finer, more precise terminal positioning and quicker adjustability while being much more user friendly. The interchangeability also makes it possible to upgrade to System III technology.

Advantages of the Ocean Applicator series:

- One applicator platform — modular family design
 - Two styles with 3 feed options: Mechanical, Pneumatic and Servo
- Same wire crimper, insulation crimper and anvil used on both applicator styles
- Open architecture allows for design flexibility
- Featuring a redesigned ram to housing interface for improved alignment and crimp consistency
- Finer incremental crimp height adjustment
- Improved and simpler adjustments on all feed units



Ocean Applicator Series from TE

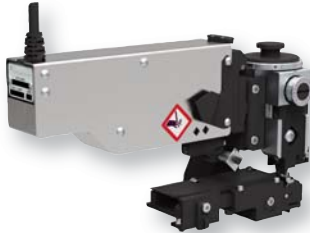
New Applicator Features developed to provide improved precision and reduced setup times

- Simple and tool-less wire and insulation crimp height adjustments
 - Fine Wire crimp height adjustment
Range = 0 - 1.5 mm
Total Increments = 0.01 mm
 - Insulation Adjustment
- Feed Types – Improved and simpler adjustments on all feed units
 - Mechanical – Micro-Feed Adjustments for forward and back strokes
 - Pneumatic – Incremental Adjustments
 - 0.04 mm forward terminal position
 - 0.08 mm back stroke adjustment
 - Servo – Push button terminal adjustments in 0.03 mm increments

Range (mm)	Step Size (mm)
3.30	0.19
1.70	0.10
0.85	0.05

- Insulation step sizes are selected based on terminal application requirements

SF Servo Applicator



SF Pneumatic Applicator



SF Mechanical Applicator



Part Number System	Feed Type	Description	Part Number
Standard "Atlantic" Style	Mechanical	Fine Crimp Height Adjust	1234567-1
	Pneumatic	Fine Crimp Height Adjust	1234567-2
	Servo	Fine Crimp Height Adjust	1234567-5
	Servo	Non-Crimp Height Adjust*	1234567-6
	No Feed	Fine Crimp Height Adjust	1234567-7
			Spare Parts Kit
	Feed Type	Description	Part Number
Asian "Pacific" Style	Mechanical	Fine Crimp Height Adjust	2-1234567-1
	Pneumatic	Fine Crimp Height Adjust	2-1234567-2
	Servo	Fine Crimp Height Adjust	2-1234567-5
	No Feed	Fine Crimp Height Adjust	2-1234567-7
			Spare Parts Kit

* Non-Crimp Height Adjust Applicator is designed to run in a terminator with System III Crimp Height Adjust Technology.



Asian-Style SF Mechanical Applicator

tooling.te.com
tooling.te.com/china
tooling.te.com/europe

Catalog 9-1773458-6 / 10-11 / Application Tooling
 © 2011 Tyco Electronics Corp. All Rights Reserved.
 TE (logo) and TE Connectivity are trademarks.
 TE Connectivity, Harrisburg, PA 17105, Phone: 888-777-5917 or 717-810-2080;
 email: toolingsales@te.com

